

PLYMPTON SPORTING AND RECREATION CLUB MASTER PLAN OVERVIEW



Acknowledgment of Country

The Plympton Sporting and Recreation Club and Tredwell acknowledges we are situated on the traditional lands of the Kaurna people and recognises the Kaurna people as the traditional custodians of the land.

Disclaimer

We make every reasonable effort to ensure the information we source for your report is true, correct and accurate and that we fully and properly represent our findings to you.

We endeavour only to work with reputable and experienced partners to obtain information and prepare our findings. Despite these efforts, the content and information provided by any third party is outside of our control and we do not make any warranty, representation or guarantee that such information is true, correct and free from errors or omissions.

We will take all reasonable steps to verify any information obtained by us from third parties however we are not liable, whether directly or indirectly, for any loss, cost, expense, claim or inconvenience arising as a result of your use of such information.

For further information:

Tredwell Management Services

TREDWELL

T: (08) 82346387

E: admin@tredwell.com.au

W: www.tredwell.com.au

01 Overview 4

Club Overview

Key Facts

Demand Drivers

Key Challenges and Opportunities

Aim & Purpose

Master Plan Key Moves

02 Master Plan 8

Floor Plans

Artist Impressions

Morphettville Race Course Open
Space

01

Overview



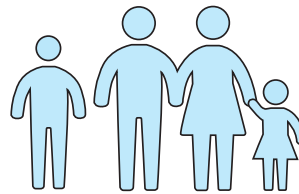
Club Overview

The Plympton Football Club was established by local resident Robert P McGhee in 1937. An important quality to Robert was strong family values. This is something he used to create the overall ethos of the club. To this day, the club still upholds a strong family orientated culture.

In time the club evolved into The Plympton Sports and Recreation Club (PSRC). This occurred in 1979 after the joining of the football and cricket clubs under the one banner. During this time, the current clubrooms were also built. In 1995 the soccer club was established and is now also a key sport at the club. The following timeline illustrates the development of the PSRC over the years.

- 1937 ○ Senior Football Club established
- 1964 ○ Senior Cricket Club established
- 1979 ○ Current clubrooms built
- 1995 ○ Senior Soccer Club established
- 1997 ○ Junior Cricket Club established
- 1998 ○ Junior Football Club established
- 1999 ○ Junior Soccer Club established
- 2021 ○ Affiliation with City Coasters Netball Club
- 2022 ○ SANFL Junior Club of the Year
- 2024 ○ AFL Accredited Gender Equity & Inclusive Club
- Good Sport Club Accredited Level 3

Key Facts

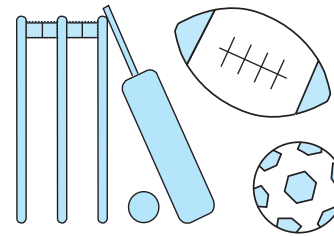


1350+

members from all ages with strong female participation across the sports

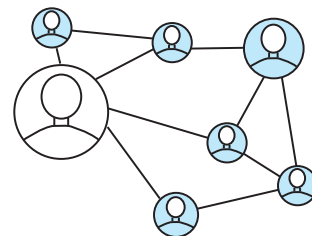
45 Teams

across all sports (21 football, 5 cricket and 19 soccer)



Women's Sport

150 girls + women active participants with no suitable changeroom facilities



Social Club

The club has a strong social club with large numbers and regular events

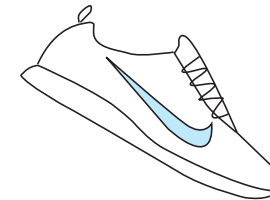
Community

Clubrooms are used regularly by a number of community groups, programs and special events



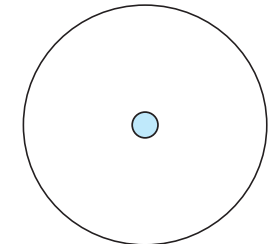
26,000+ people

The precinct services 26,000 people in the direct catchment and is highly utilised by local residents for fitness, dog walking and exercise



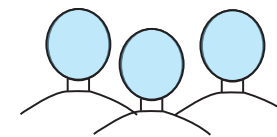
Attracts

participants from a large catchment not just from the local suburbs



Regular User Groups

- Plympton Halifax Calisthenics
- City Coasters Netball Club
- Harley Davidson Owners Group (HOGS)



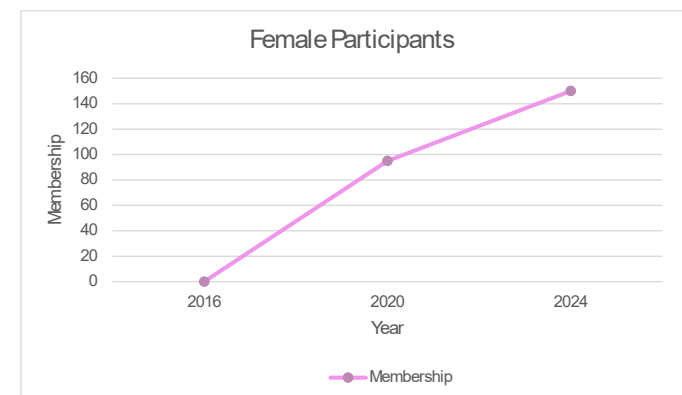
Demand Drivers

Key Facts:

- All areas are forecast to grow significantly over the next 15+ years with infill and high-density developments occurring throughout the area. This is estimated conservatively at 12-13% growth (DIT Estimates] from 2021 to 2036 an increase of 2,750-3,000 people (not including the racecourse development).
- There are up to 3,000 new residents anticipated in the SAJC development alone essentially a whole new suburb on the doorstep of the PSRC.
- The SANFL, SACA and FFSA have all identified, through their Strategic Facility Plans a drastic shortage of playing ovals/fields particularly in the Inner South Western region of Metropolitan Adelaide.
- The City of Holdfast Bay and the City of Marion recognise, through their open space planning, the shortage in public open space provision and recognise the provision of active reserves in the Plympton and surrounding area is insufficient for the current population. This issue will only exacerbate with additional population growth.

“The Census usual resident population of Plympton SLA2 in 2021 was 26,480, living in 12,114 dwellings with an average household size of 2.23.”

- The graphs below outline the strong overall growth in membership and the female numbers of the PSRC over the past ten years. The PSRC growth is anticipated to continue, subject to the proposed redevelopment and finding adequate playing ground space to enable expansion.



Key Challenges and Opportunities

- **Strong** membership and participant **growth** current and forecast
- No changeroom facilities for **female participants** and need for **uni-sex changerooms** (current changerooms were designed for male)
- Current sportsground is **at capacity** and suffers from over-use which increases maintenance costs and increases the **risk of injury** to participants
- Difficulty in accessing alternate grounds in the local area including schools and Council reserves **due to capacity constraints**
- **High population growth** predicted for the local area through **in-fill developments** in existing suburbs and **high-density housing** proposed for Morphetville Racecourse (adjoins the current precinct) and along Anzac Highway
- **Lack of current open space** in the local area suitable for **sport and active recreation**
- Need for **additional lit playing grounds** for football, cricket and soccer to cater for sports clubs predicted growth
- Need for **increased function space** and discrete function areas
- **Open space provision** required in the new development

- Synergies with the Club and the proposed residential development and the PSRC can provide activities and **strong links to the local community** for the new residents
- Opportunity to create a **community hub** either at the existing precinct or within the new development that includes community activities and services along with sporting activities
- Plans for additional **community use** if the new facility is developed.

Aim and Purpose

The aim of this master plan is to identify the future facility requirements including clubrooms, changerooms, sports grounds (including lighting) and ancillary facilities to cater for the strong growth of the club and forecast strong population growth of the local area.

Master Plan Key Moves

- Shift the sports playing fields to the east to gain more space and efficiencies in community activation areas
- Proposed new clubroom building to the north-west corner of the site, allowing for construction while the existing clubrooms are still in use
- New integrated universally accessible changeroom facilities compliant with AFL, Cricket Australia and Football Australia guidelines suitable for female use.
- Playground relocation to the south-western corner of the site for better access to the new building and for easier access to amenities
- Parking moved to direct access from street to allow more space for community functions
- Grassed area behind the western football goals creates warm up space without interfering with the playing zone
- Cricket training nets and storage shed to the south eastern corner of the site
- Proposed pathway along the southern boundary of the site connecting the building with the community interface
- Formalised 90 degree parking on Milton Avenue.

02

Master Plan





ROLLER DOOR BETWEEN CHANGE ROOMS TO SO THAT THEY CAN BE OPENED INTO LARGER SINGLE CHANGE ROOM

EXTENT OF LEVEL 1 OVERHANG SHOWN DASHED

TRAINER / STRAPPING ROOM WITH ACCESS INTO BOTH CHANGE ROOMS

PUBLIC TOILETS WITH DIRECT LINE OF SIGHT TO PLAYGROUND



SERVICE AREA

ACCESS TO BALCONY VIA STAIRS

LARGER SPORTING EQUIPMENT STORE

SINGLE POINT OF ACCESS FOR CHANGEROOMS AND UMPIRES

FITNESS ROOM WITH DIRECT ACCESS FROM CHANGE ROOMS AND ONTO OVAL SPACE TO ASSIST WITH TRAINING

CANTEEN AND BAR SET BACK TO ALLOW FOR LARGER UNDERCOVER AREA AND GATHERING SPACE







Morphettville Race Course Open Space

The surplus South Australian Jockey Club land has been rezoned to permit new residential high and medium density developments along with commercial developments and community facilities. The PSRC is keen to work with the SAJC, local Councils, State and Federal Government to provide a modern community sporting hub that caters for the current and future demand for sport and active recreation, along with sufficient open space for the community to use (for both existing and future residents).

The PSRC key facility requirements include

- Additional ovals for football (AFL) and cricket, floodlit suitable for matches (Minimum 2 ovals)
- New soccer pitch/es floodlit suitable for matches (minimum 1 preferably two pitches)
- New unisex changerooms
- Expanded car parking



Artist impression of the proposed development at the Morphettville Racecourse

Tredwell Management Services

TREDWELL

T: (08) 82346387

E: admin@tredwell.com.au

W: www.tredwell.com.au